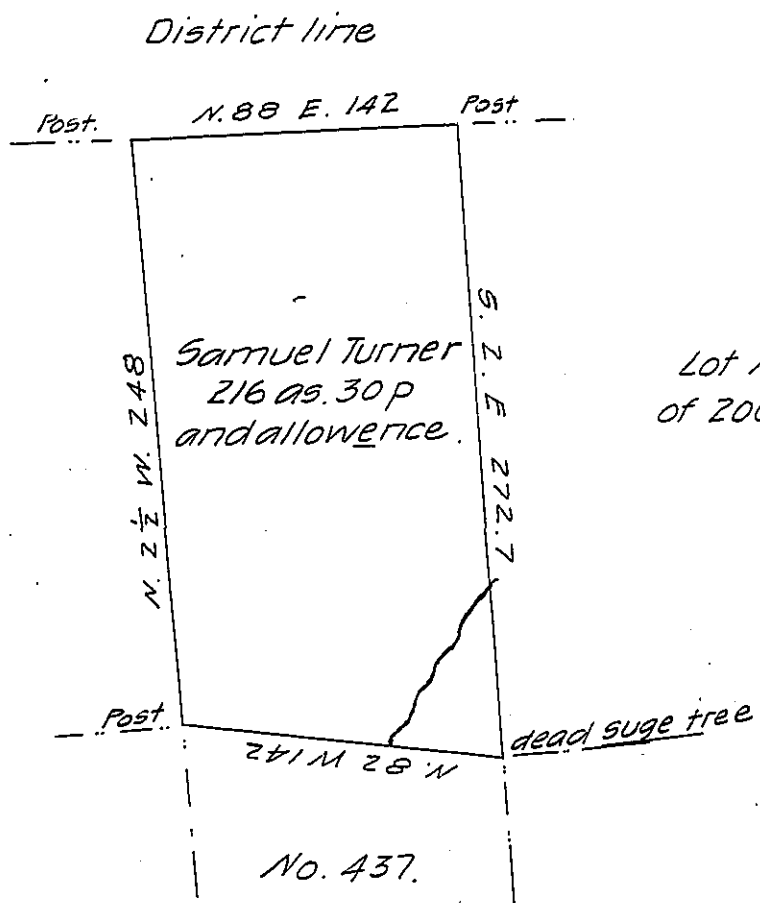


No. 439  
of 200 acres.



Lot No. 451.  
of 200 acres

Situate in Wolfcreek Township Mercer County on the waters of Wolf creek and in the third District of Donation lands being a survey of Lot ~~No 448~~<sup>438</sup> of 200 acres in the said District. Supposed to be an undrawn Lot containing two hundred & sixteen acres & thirty perches & allowance of six per cent for roads &c<sup>a</sup> as surveyed by me February 3rd 1846 for Samuel Turner. In pursuance an actual settlement and residence made thereon by Alexander Montgomery and sold by him to Samuel Turner.

To John Laporte Esqr. By me John Findley D.S.  
Surveyer General.

N.B. the above lot may possibly be Lot No. 438 as I find in my Official Draft two Nos. of 448 and none of 438, it is however the one adjoining as above described

John Findley D.S.

IN TESTIMONY that the above is a copy of the original remaining on file in the Department of Internal Affairs of Pennsylvania, made conformably to an Act of Assembly approved the 16th day of February 1833, I have hereunto set my hand and caused the Seal of said Department to be affixed at Harrisburg, this third day of April 1907

*Isaac B. Brown*  
Secretary of Internal Affairs.